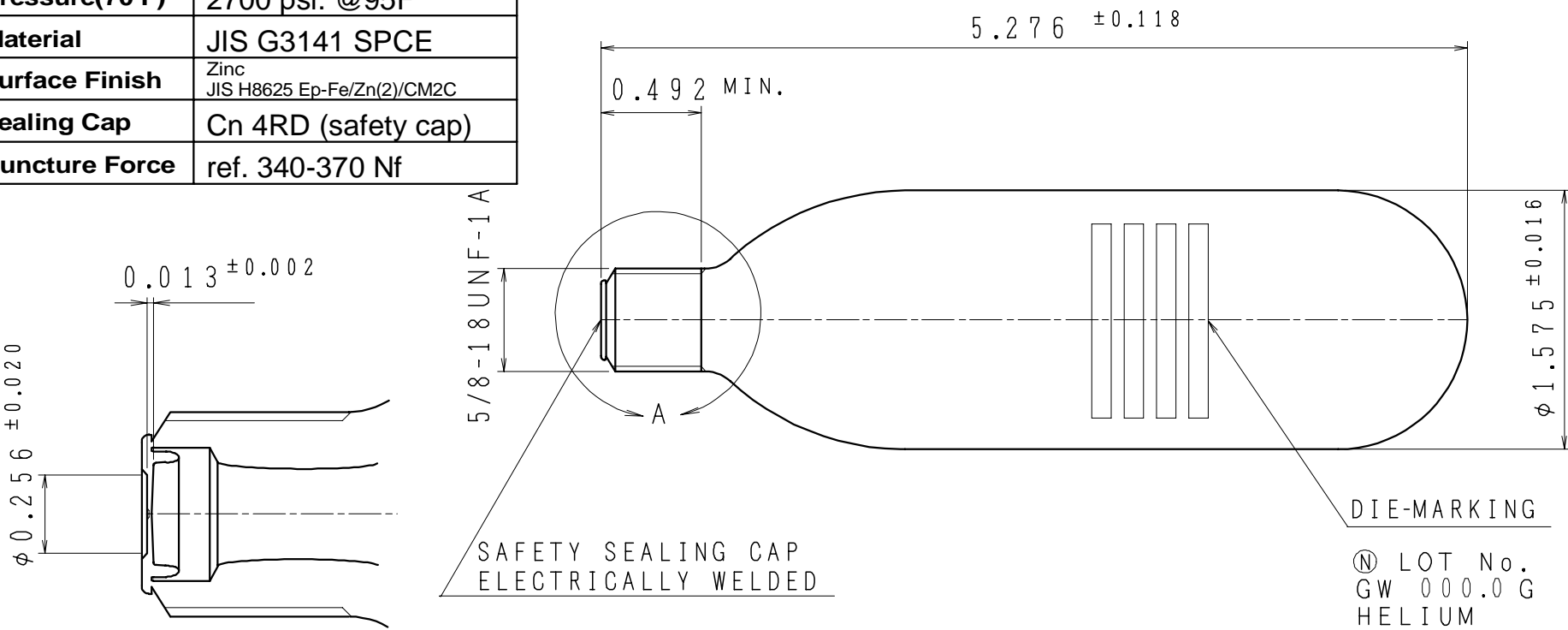


Gas Type	Helium
Gas Wgt(g)	2.5 +0.3/-0 g
Internal Vol.	95 ml
Fill Density	NA(compressed gas)
Burst(min)	8100 psi.
Pressure(70 F)	2700 psi. @95F
Material	JIS G3141 SPCE
Surface Finish	Zinc JIS H8625 Ep-Fe/Zn(2)/CM2C
Sealing Cap	Cn 4RD (safety cap)
Puncture Force	ref. 340-370 Nf

SYM.	REV.	BY	DATE	APR.



A-SECTION (2/1)

ITEM NUMBER:	49615HE
DESCRIPTION:	2.5g, He, 5/8, Zinc-y Cn 4RD
SPECIFICATION:	

Ⓝ LOT No.
GW 000.0 G
HELIUM
FP 18.6

Drawn	Design	Checked	Approved
IF (SOF)	Leland	LS (SOF)	IF (SOF)
Scale	Date	Drawing No.	
1/1 2/1	Aug 23,05	F-0033-1	

LELAND Gas Technologies Since 1965.

Leland Limited Incorporated Box 466 South Plainfield, New Jersey 07080 USA
e-mail: tech@lelandltd.com Sales & Support 800.984.9793/908-668-1008